



STORIES FROM THE ARCHIVES:

DR E. NEIL MCQUEEN, PLC PRINCIPAL 1920-1929

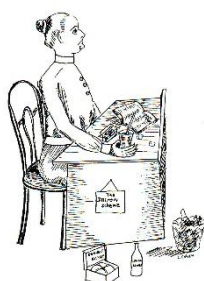
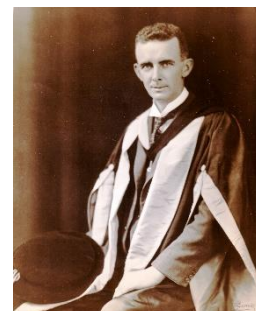
Dr McQueen left PLC amidst great controversy in 1929, but his legacy to the College was long-lasting and valuable.

Dalton Plan: He introduced a modified form of this in 1923. Class time was reduced and the pupils worked both individually and collaboratively and were given greater responsibility in completing requirements and meeting deadlines.

PLC's School Certificate: More comprehensive than that Awarded by the Department of Education, this certificate was based on the record of a girl throughout her whole time at PLC and was awarded when the student had reached the required standard in scholarship, sport and school life.

House System: McQueen introduced Houses in the early 1920s and they played a big part in school life, with competitions in sports, music, poetry, drawing, dancing and elocution.

Music: With the appointment of Lindley Evans (later known as "Mr Melody Man" for his work with the ABC), Dr McQueen established a strong tradition of both musical performance and music appreciation.



A student drawing about the Dalton Scheme
Aurora Australis December 1922



PLC's School Certificate awarded to Betty Pirie (later Drummond) in 1925



Jean Whitehead and Joyce Cleaver, Captain and Vice Captain of McQueen House, at Ashfield Oval in 1930. Donated by Joyce Wise (née Cleaver) student 1929-1932



PLC won the Dempster Shield in 1926, the first year of the British Musical Society's Secondary Schools' Eisteddfod. We won it so many times that it became the property of the school.