



Transport  
for NSW

# Transport Access Program

## Croydon Station Upgrade

### COMMUNITY NOTIFICATION – CHANGES TO STATION ACCESS JULY 2016

The Transport Access Program is a NSW Government initiative to provide a better experience for public transport customers by delivering accessible, modern and integrated transport infrastructure.

Construction work will continue in July as part of the Croydon Station Upgrade, with the following changes to station access and facilities to follow.

#### Weekend work – Saturday 2 July 2016

From 8am to 10pm, Saturday 2 July 2016 activities will include:

- Installation of signage
- Fit out of a temporary station office and footbridge.

Noise associated with these works will be kept to a minimum, with no equipment in use.

#### Changes to station access and facilities

From Sunday 3 July 2016, construction will commence on stage 2 of the Croydon Station Upgrade.

Changes to station and pedestrian access will be in place following this date.

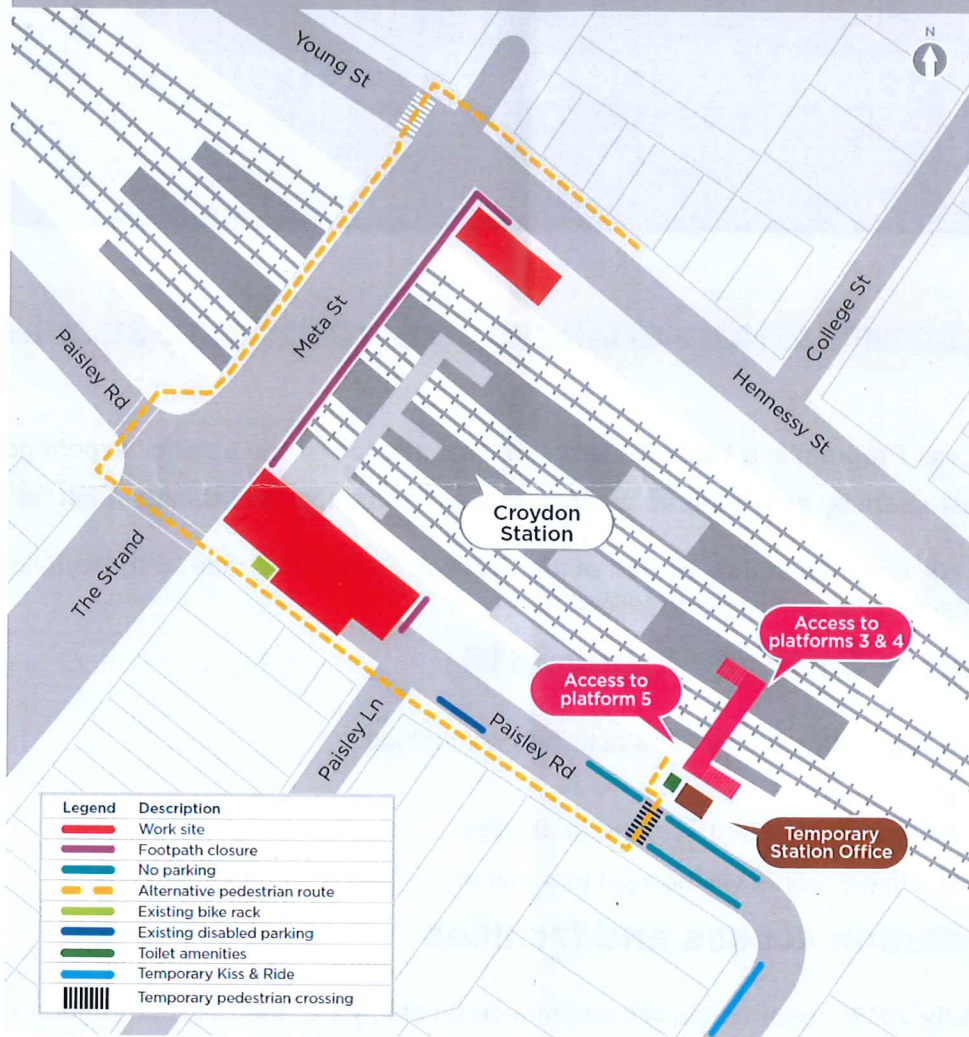
- The current station office and existing access route **will be closed to commuters.**
- During the closure of the current station office and the existing access route, **a temporary station office will be established on Paisley Road** (near the intersection of Edwin Street South).
- **A temporary pedestrian crossing will be installed on Paisley Road** (near the intersection of Edwin Street South) to provide a safe crossing point for pedestrians to access the station.
- **No parking will be available on Paisley Road on approach to the temporary pedestrian crossing** to provide the required clearances.
- **Access to platforms 3 and 4 will be via the temporary footbridge and access to platform 5 will be via a walkway with direct access from Paisley Road.**

The below map outlines traffic and pedestrian changes during stage 2 of construction.

For more information call 1800 684 490,  
Email [projects@transport.nsw.gov.au](mailto:projects@transport.nsw.gov.au) or visit [transport.nsw.gov.au/projects](http://transport.nsw.gov.au/projects)  
For urgent enquiries or complaints regarding construction activities, please call 24 hours 1800 775 465

**NSW**  
MAKING IT HAPPEN

# Traffic and pedestrian changes during stage 2 of construction



This document contains important information about public transport projects in your area. If you require the services of an interpreter, please contact the Translating and Interpreting Service on **131 450** and ask them to call the Transport Projects Division on **(02) 9200 0200**. The interpreter will then assist you with translation.

## Arabic

تضمن هذه الوثيقة معلومات عن مشاريع النقل العام في منطقتكم. إذا كنتم بحاجة إلى خدمات مترجم، الرجاء الإتصال بخدمة الترجمة (02) 9200 واطلبوا منهم ان 131 450 الاشفية والخطية على رقم عيائهم مسبق اولصرتي. تم جرتل اب مجرتل ا ب ك د ع ا س ي ا د ن ع. 0200. النقل على رقم

## Chinese

这份文件包含你所在地区公共交通工程项目的重要信息。如果你需要传译服务，请致电翻译与传译服务机构，电话131450，要求他们为你接通交通工程部 (Transport Projects Division)，电话是 (02) 9200 0200。传译员会为你做翻译。

## Italian

Il presente documento contiene importanti informazioni sulle iniziative nel campo del trasporto pubblico nella vostra zona. Se desiderate i servizi di un interprete, contattate il Servizio traduzioni e interpreti al numero 131 450 indicando di voler parlare con la Transport Projects Division al numero (02) 9200 0200. L'interprete vi aiuterà a condurre la conversazione telefonica

## Filipino

Ang dokumentong ito ay naglalaman ng mahalagang impormasyon tungkol sa mga proyektong transportasyon na pampubliko sa inyong lugar. Kung kailangan ninyo ng serbisyo ng tagapagpaliwanag, makipag-ugnayan po sa Serbisyo ng Pagsasalin at Pagpapaliwanag sa 131 450 at hilingan silang tawagan ang Transport Projects Division (Sangay ng mga Proyektong Transportasyon) sa (02) 9200 0200. Tutulungan kayo ng tagapagpaliwanag sa pagsasalin.

Delivered by:



For more information call **1800 684 490**,  
Email [projects@transport.nsw.gov.au](mailto:projects@transport.nsw.gov.au) or visit [transport.nsw.gov.au/projects](http://transport.nsw.gov.au/projects)  
For urgent enquiries or complaints regarding construction activities, please call 24 hours **1800 775 465**

